



# WOOD FORUM

Newsletter of the Sonoma County Woodworkers Association

Volume 41, Issue 5

December 2021

## Makers Meeting 2021



Photo by Don Jereb

It's been a long road, but here we are: *Artistry in Wood* 2021 is underway and looking good. Three weeks ago we met with the judges, who looked very favorably upon this year's entries, as the following pages will reflect. In a couple of weeks, on December 14, we will again convene at the Museum, this time for the Makers Meeting, possibly the most popular gathering of the year. We will hear from the creators of the Show entries themselves, speaking about the inspirations that guided their designs and perhaps some special technique they

want to share. The meeting is an open forum: questions from the audience will be addressed by the person who made the entry.

It is also the Annual Meeting of the SCWA, where we discuss our past and future business, and elect Board Members for the coming year.

See you there!      Tuesday, December 14, 2021    7PM-8:30PM

*Artistry in Wood 2021*

# BEST of SHOW

*Fibonacci* by Steve Klein



**Steve Klein** has two entries in this year's show, an SMK electric guitar and the beauty seen here. When he heard about the Redwood Violin Project he was encouraged to enter his work in the 2021 *Artistry in Wood* Show. We're glad he did.

*Photo by Debbie Wilson*



# Best of Furniture



*Photo by Debbie Wilson*

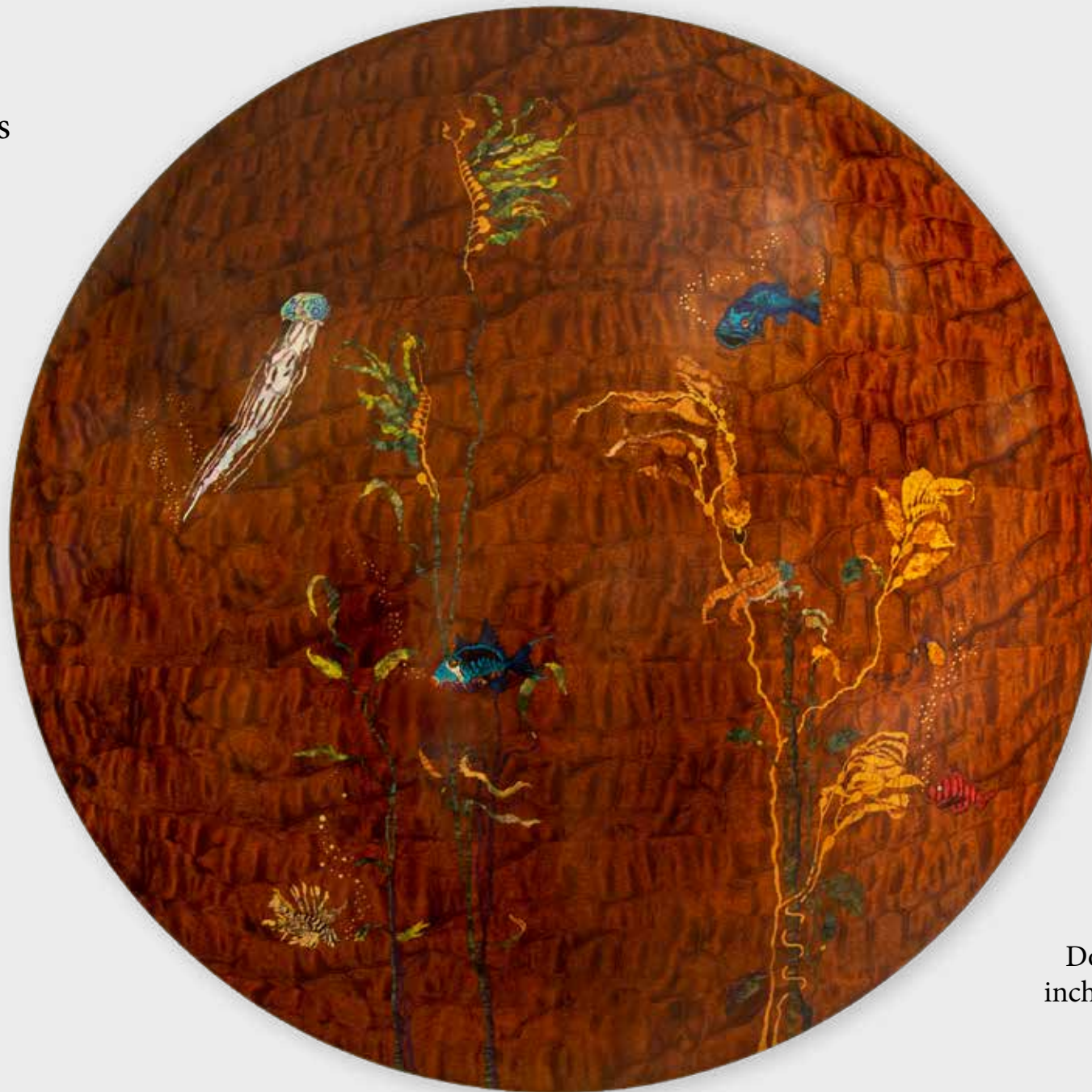
*Comfortable Interpretation of  
Gerrit Rietveld's Steltman Chairs*

by Don Jereb

The inspiration for these chairs came from Dutch Designer Gerrit Rietveld's Steltman Chairs. Originally commissioned in 1963 by the Steltman Jewelry Store in The Hague, they were mirror image chairs meant for young couples choosing wedding rings. California Claro Walnut, Osmo Polyx Oil finish.

# Best of Art

*Ocean* by David J. Marks



1/16 inch thick quilted mahogany, ebony, betelnut, tagua nut, Mother of Pearl, Pau shell, green rippled abalone, black lip mother-of-pearl, various dyed stabilized pen blanks, recon stone. Hand rubbed oil varnish.

Dome, three feet in diameter by eight inches deep.

*Photo by Debbie Wilson*

# Best of Miscellaneous

## *Alternate Universe*

by Steve Forrest



This was a collaboration between Steve Forrest, who turned the spheres, Don Jereb, who designed and assembled the mobile, and Harvey Newman, who executed the metal work and assembled the mobile.

Various woods, steel, wire.  
Oil/varnish/wax. 52 x 52 x 30

*Photo by Debbie Wilson*



# Best of Turning



*Bleached Boxelder* by Ric Taylor

*Photo by Joe Scannell*

Boxelder wood, bleach, enamel, clear  
matte acrylic finish, 17.25 x 4.25.

# Best Box



*Monolith* by Dominique Charmot

This box features a texturing technique that emulates some naturally occurring eroded structures. A hidden button enables one to open the box and reveal a set of small drawers.

Lacewood, purpleheart, black acacia, wenge. Finish: wipe off polyurethane. 6"x6"x10".

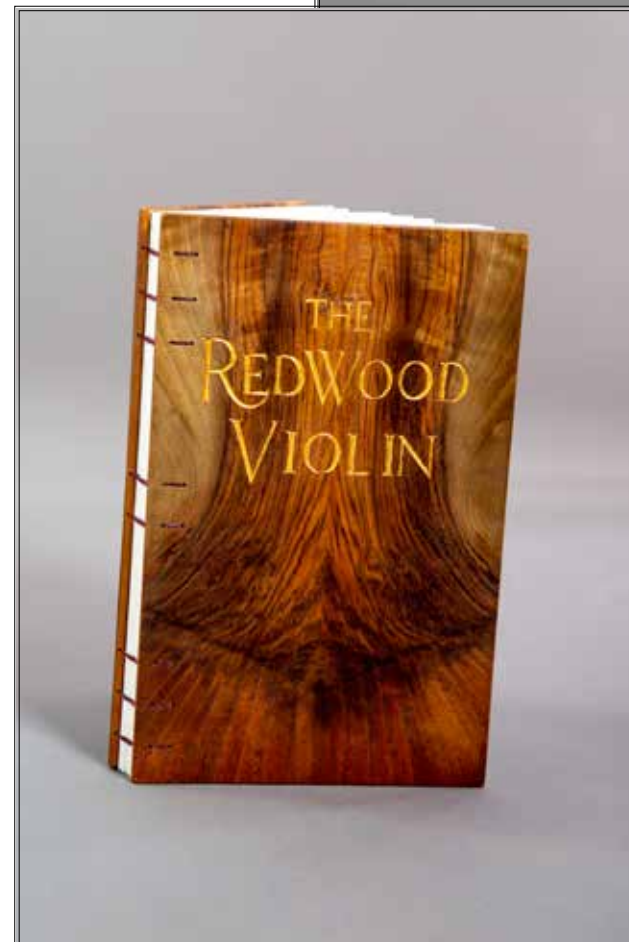


*Photos by Debbie Wilson*



*Photos by Debbie Wilson*

**Award of  
Excellence**



*The Redwood Violin*  
by Andrew Carruthers





*Stepstool* by John Rinehart

## Awards of Excellence



*Trumeau Mirrors* by Joe Amaral

*Photos by Debbie Wilson*



*California Diamondback Rattlesnake* by Charlie Saul

# Awards of Excellence



*Crowning Glory* by Charlie Saul



*Photos by Joe Scannell*

*Photo by Debbie Wilson*





*Hand carved walnut oval bowl with  
tall and outstretched white feet*  
by Patrick McDonnell

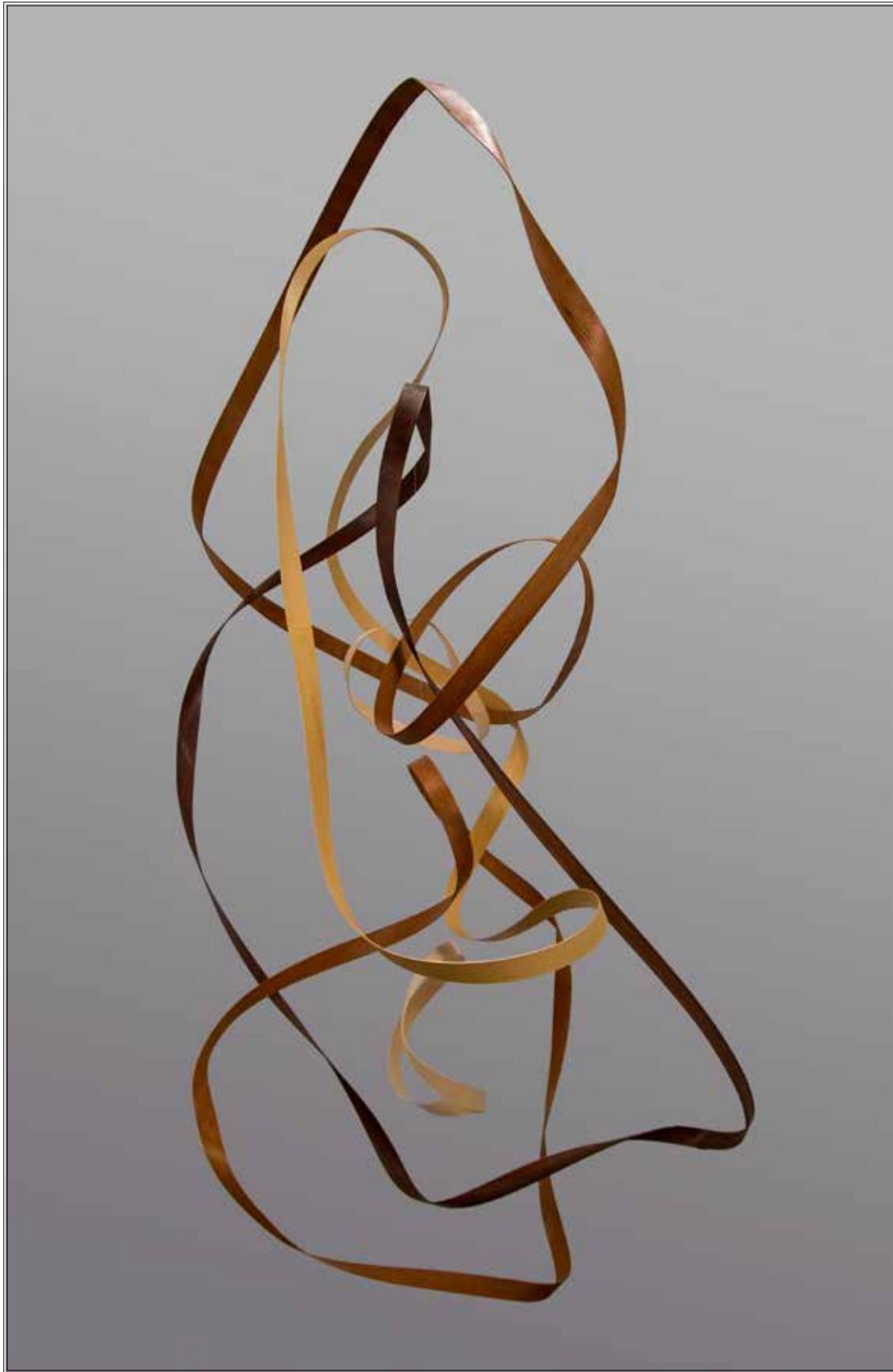
## Awards of Excellence

*Fungus Among Us* by Robert Nelson



*Photos by Joe Scannell*





*Möbius Tangle Mobile #2* by Don Jereb

**Awards  
of  
Excellence**



*Big Leaf Maple Vessel* by Ric Taylor

*Photos by Debbie Wilson*

## Awards of Excellence



*Floor Guitar Stand* by Kent Parker



*Display Cabinet* by Kent Parker

*Photos by Debbie Wilson*

## Awards of Excellence

*Bookmatched Maple Platters*  
by Steve Griswold



*Photo by Joe Scannell*



*Islands #1* by Harvey Newman

*Photo by Debbie Wilson*





*Whimsy* by Don Ketman

**Awards of Excellence**

*Red Gum Eucalyptus Bowl* by Steve Forrest



*Photos by Joe Scannell*



***Writing Table*** by Alex Hunt

*Photo by Debbie Wilson*

## Awards of Excellence



***Growth*** by Alex Hunt

*Photo by Joe Scannell*



*Reports of the Death of Radio Have Been Exaggerated*  
by Stephen Hamner

*Photos by Debbie Wilson*

## Awards of Excellence



*Splat Bowl* by Mark Knize



Awards  
of  
Excellence



*Cockatoo inspired by Ohara Koson* by Greg Zall

*Photo by Debbie Wilson*



*27 Bones* by Les Cizek

*Photo by Joe Scannell*





***Container*** by Ralph Carlson

*Photo by Joe Scannell*

## Awards of Excellence



***Claro Walnut Calabash Bowl*** by Hugh Buttrum

*Photo by Debbie Wilson*

## Award of Excellence



*Display Box* by Ralph Carlson

*Photos by Debbie Wilson*





**Award  
of  
Excellence**



*Krenov Cabinet* by Lucinda Daly

*Photos by Debbie Wilson*

## Awards of Excellence



*Antiphony* by Brian Cullen



*Undulation* by Brian Cullen

*Photos by Joe Scannell*

**Award  
of  
Excellence**



*Forever* by Darryl Dieckman



*Photos by Debbie Wilson*



## Award of Excellence



*Armchair and Desk* by Dominique Charmot

*Photos by Debbie Wilson*

## Officers of the Association

Chairman

Secretary

Lars Andersen

Program Chair

Guild Chair

Mark Tindley

Treasurer

Judith Garland

Show Chair

Don Jereb

Editor

Joe Scannell



Web Master

Rod Fraser

*Wood Forum* is the monthly newsletter of the Sonoma County Woodworkers Association. Please feel free to submit articles and photographs for inclusion in the publication. You can send your submissions to the Wood Forum Editor at [SCWAEditor@gmail.com](mailto:SCWAEditor@gmail.com). Advertisements are also accepted with a nominal cost for paid members.

## Membership Application

I would like to join the SCWA to meet other people interested in the craft, the art and the business of fine wood-working. Enclosed is my check in the amount of \$35 for the annual dues. I understand that this fee entitles me to attend monthly meetings and to receive the Wood Forum newsletter by email or via the SCWA's website.

Name \_\_\_\_\_ Email \_\_\_\_\_

Address \_\_\_\_\_

City, Zip \_\_\_\_\_ Home Phone \_\_\_\_\_

Cell Phone \_\_\_\_\_ Work Phone \_\_\_\_\_

What can you do to help further the organizational goals of our volunteer-run association? Please tell us how you would like to help:

\_\_\_\_\_

\_\_\_\_\_

Please send check and completed application to:

Sonoma County Woodworkers Association, PO Box 4176, Santa Rosa, CA 95402